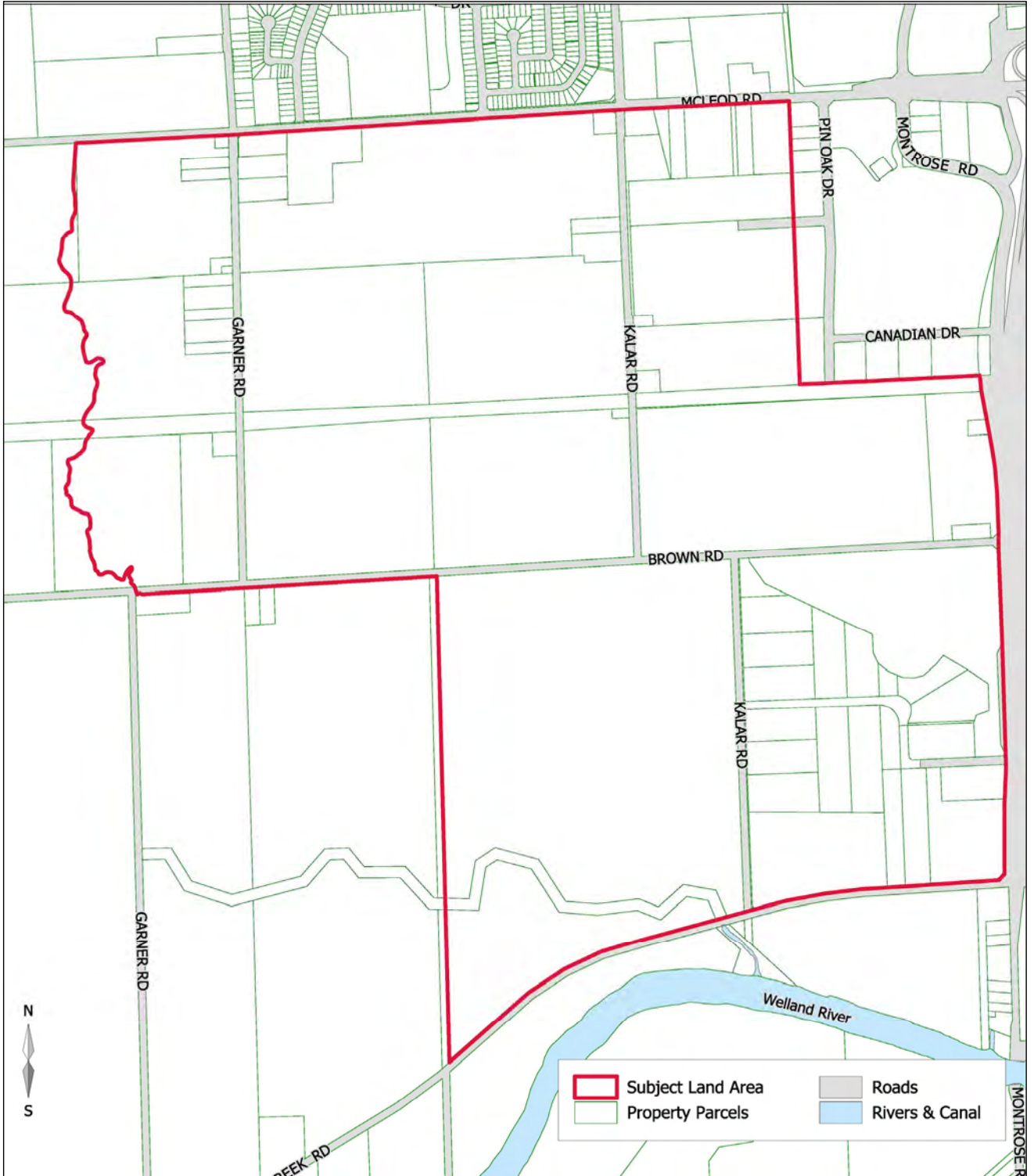


WARREN WOODS SECONDARY PLAN

STUDY AREA



WARREN WOODS SECONDARY PLAN

PROCESS

INITIATE STUDY

- The Study is being lead by Planning & Development Staff
- A Technical Committee to be set up with representatives key municipal divisions
- Public and land owner consultation

ESTABLISH GOALS & OBJECTIVES

STUDIES AND BACKGROUND INFORMATION

CONFIRM ISSUES AND CONCERNS

DEVELOP ALTERNATIVE CONCEPTS (3 OR MORE)

CONSULT AND REVISE CONCEPTS

DEVELOP PREFERRED CONCEPT AND POLICIES

PRESENT PREFERRED CONCEPT

COUNCIL APPROVAL OF PLAN AND POLICIES

IMPLEMENT RECOMMENDATIONS

WARREN WOODS SECONDARY PLAN

PUBLIC CONSULTATION AND PARTICIPATION

Public participation in the Secondary Plan will be ongoing throughout the Study

CITY WEBSITE

COMMENTS SHEET

3 OPEN HOUSES

PUBLIC MEETING

Open House #1 (May 6th)

- background information
- objectives of the study
- outline of the studies
- Project schedule

Open House #2

- Results of the background studies
- Identification of constraints

Open House #3

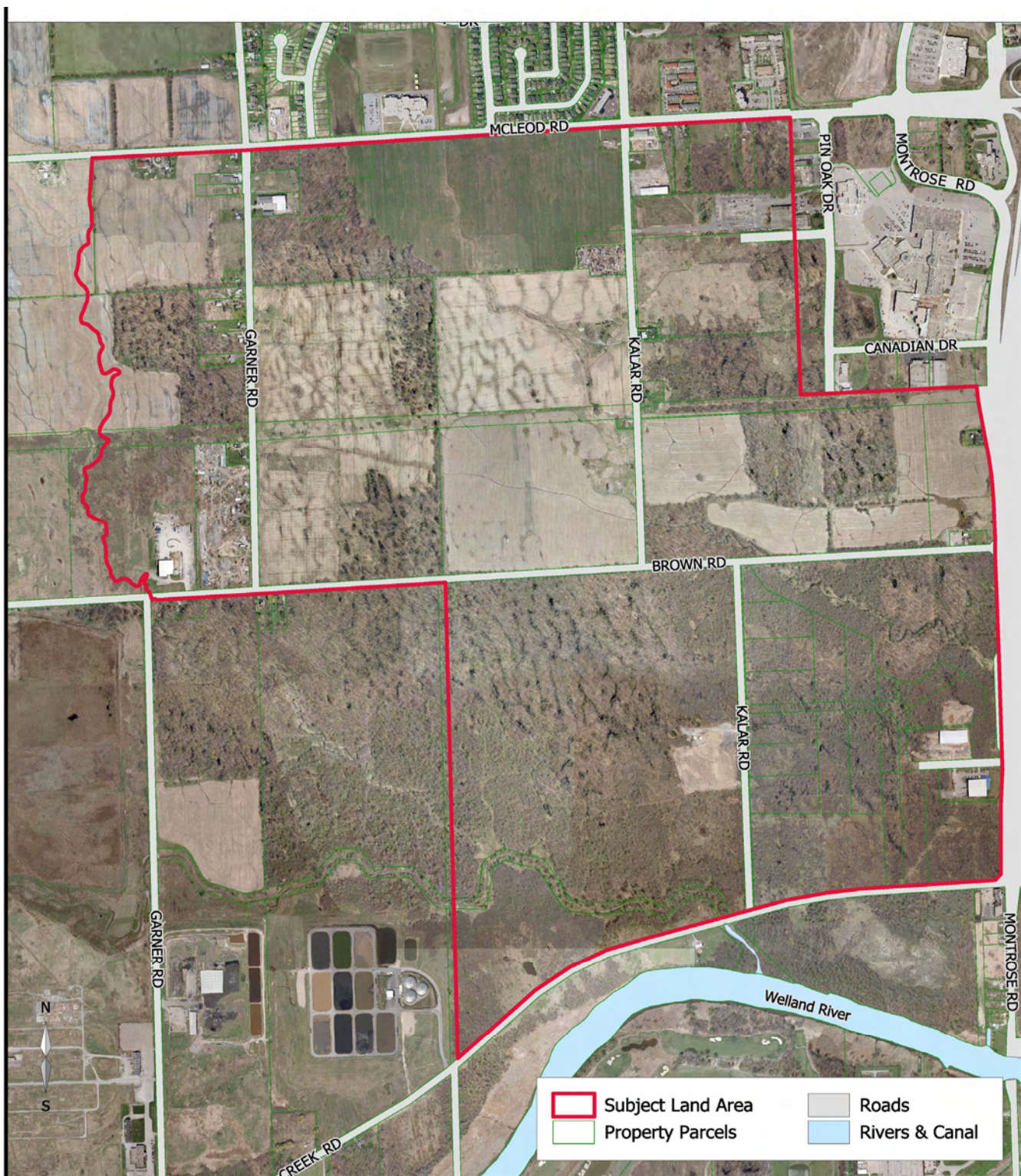
- Presentation of Land Use Concepts
- Comments will contribute to a preferred Secondary Plan Concept

Public Meeting

- Presentation of the Preferred Secondary Plan Concept and Policies to City Council

WARREN WOODS SECONDARY PLAN

EXISTING LAND USES



GOALS AND OBJECTIVES

There are several goals of the Secondary Plan:

- To create a complete community within the City i.e. an appropriate mix of jobs, local services and a full range of housing;
- To achieve a density of 50 residents and jobs per hectare
- To create an urban environment that is safe and pedestrian oriented
- To sustain and enhance the natural environment
- To provide connectivity to the greater community

The Secondary Plan must will be consistent with:

- The City's Municipal Comprehensive Review and Growth Management Strategy
- The Regional Policy Plan and the Region's Growth Management Study
- The Provincial Policy Statement
- The Growth Plan for the Greater Golden Horseshoe

WARREN WOODS SECONDARY PLAN

STUDIES AND BACKGROUND INFORMATION

In preparing the Secondary Plan, the necessary studies are:

Environmental Planning Study

- Amalgamation of existing studies
- Review of non-inventoried heritage areas
- Recommendations for a natural heritage strategy and monitoring plan
- Recommendations on development

Environmental Site Assessment

- Phase 1
- Phase 2

Archaeological Assessment

- Stage 1 Assessment
- Stage 2 Assessment (if necessary)

Functional Design Study

- Development Staging
- Extension and routing of services
- Stormwater management
- Integration with Municipal Transportation Master Plan
- Identify collector/arterial roads
- Identify offsite improvements
- Bus routes and transfer areas
- Traffic volume forecasts
- Financing

Open Space Plan

- Pedestrian linkages and trails to neighbourhood commercial area, schools, parks
- Major parkland areas
- Integration with natural heritage areas

Planning Overview

- Neighbourhood definition
- Linkages to existing neighbourhoods and compatibility
- Distribution of housing types and density (50 residents and jobs per hectare)
- Location and extent of neighbourhood commercial uses
- Compatibility between industrial areas and sensitive land uses
- Phasing of development
- Institutional uses including school and church sites
- Growth management and Provincial Policy Statement provisions

Urban Design Guidelines

- Streetscapes along collector and arterial roads
- Walkability
- Neighbourhood Commercial sites
- Crime Prevention through Environmental design
- Bike lanes and paths
- Tree preservation
- Landscaping provisions
- Utilities
- Use of Regional Urban Design Guidelines
- Neighbourhood structure and mixed use
- Energy conservation